

Assignment 04

Started: Oct 6 at 9:06pm

Quiz Instructions

Question 1

1 pts

For forces implied at the joint, a compression load is drawn as an arrow pointed _____ the joint?

- Away from
- Towards
- You can't imply a force at a Joint
- Around

Question 2

1 pts

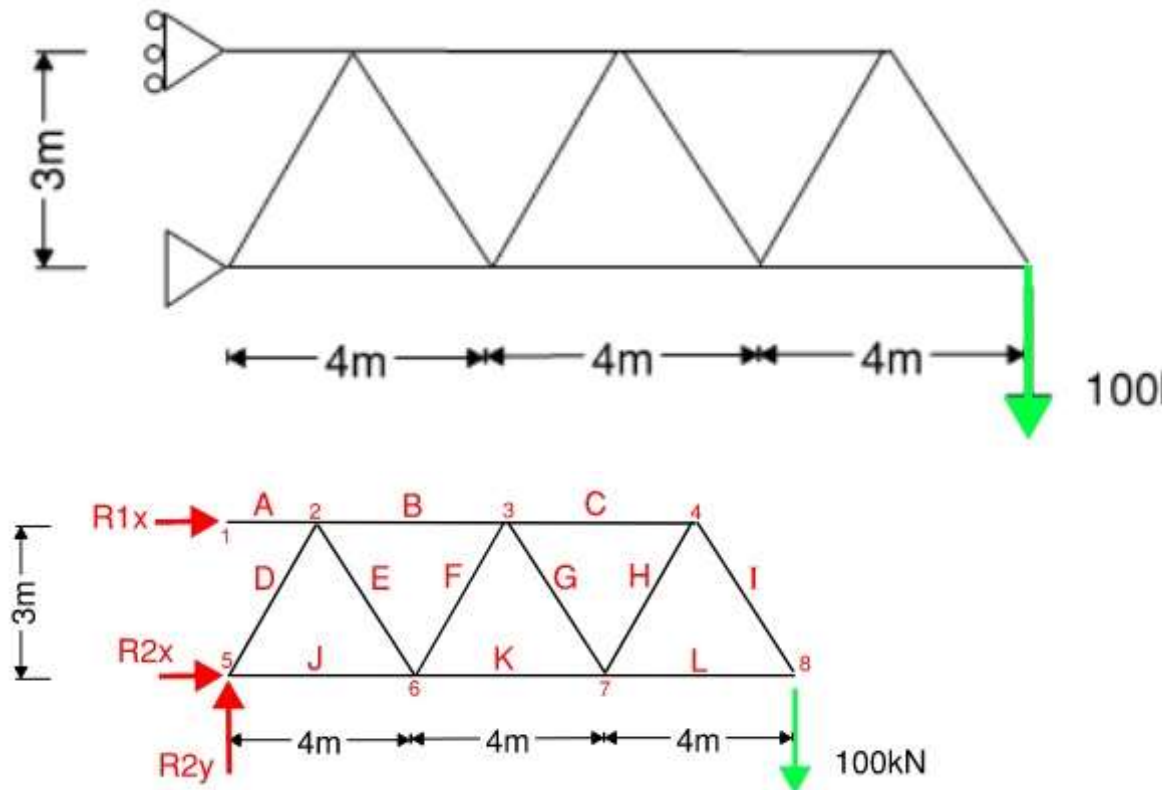
If the system is equilibrium, any part of the system is _____.

- Safe
- In Equilibrium
- Moving
- Dancing

Question 3

1 pts

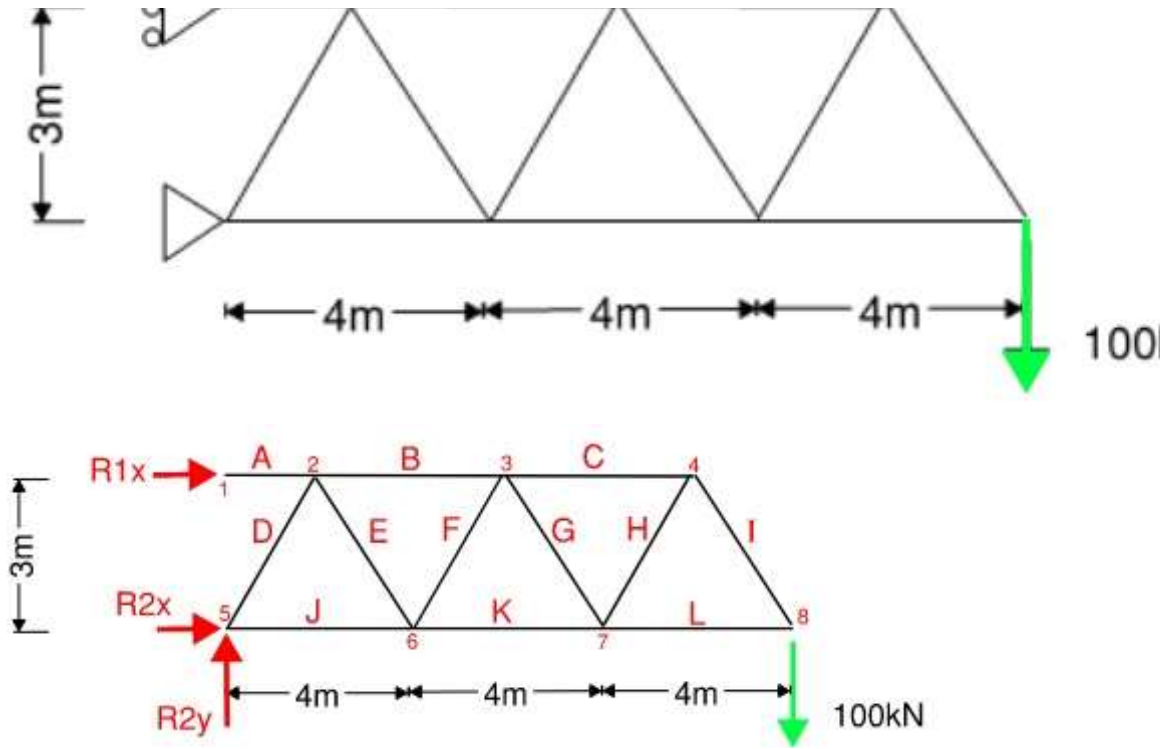
Looking at the following truss, what is the value for Reaction R_{2y} (kN)? The Free Body Diagram has been drawn for you with the direction of the reactions assumed (Calculations may determine this to NOT be correct). Provide your answer to 0 decimal places. Do not write the Units.



Question 4

2 pts

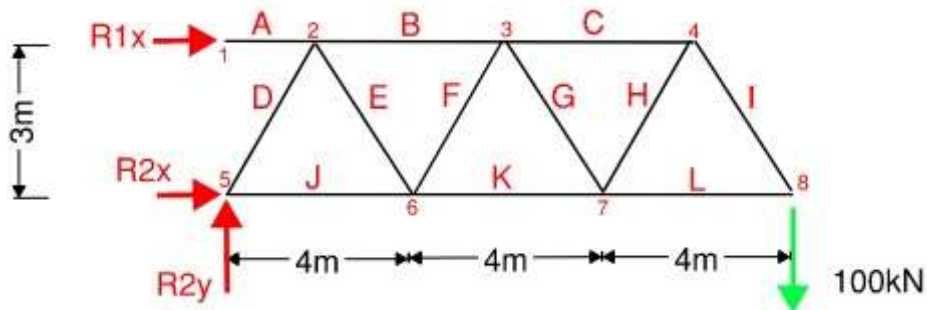
Looking at the following truss, what is the value for Reaction R_{2x} (kN)? The Free Body Diagram has been drawn for you with the direction of the reactions assumed (Calculations may determine this to NOT be correct). Provide your answer to 0 decimal places. Do not write the Units. This is a multiple step calculation and depends on your previous answer.



Question 5

1 pts

Is the Member A from the previous two questions in Tension or Compression?

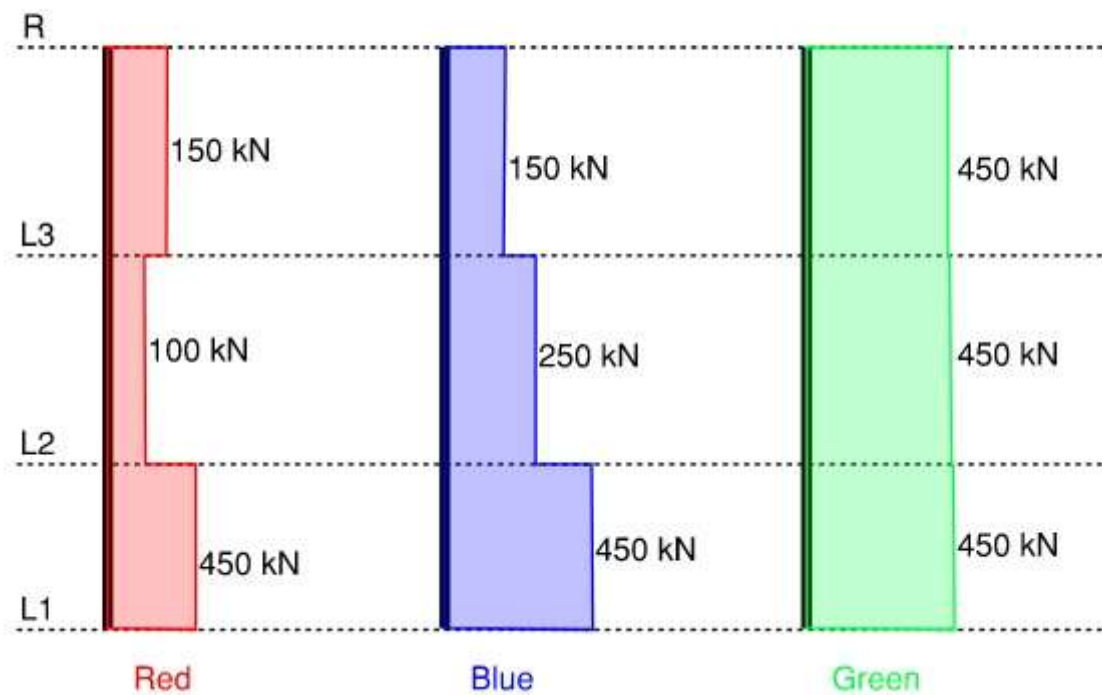
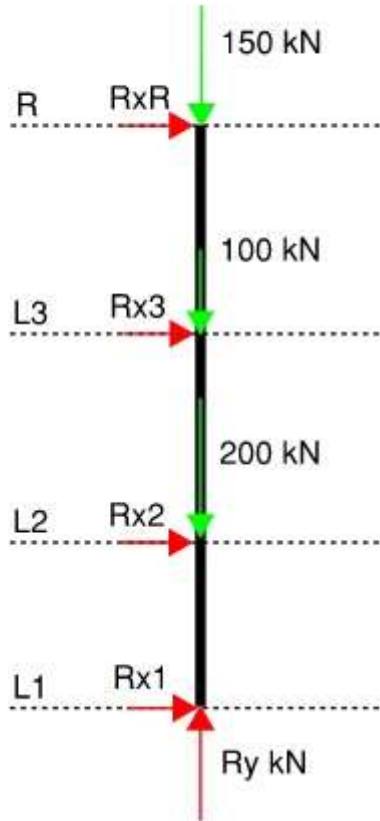


- Tension
- Compression

Question 6

1 pts

Which is the correct Axial Force Diagram for the following Free Body Diagram?



Orange

- Blue
- Red
- Green

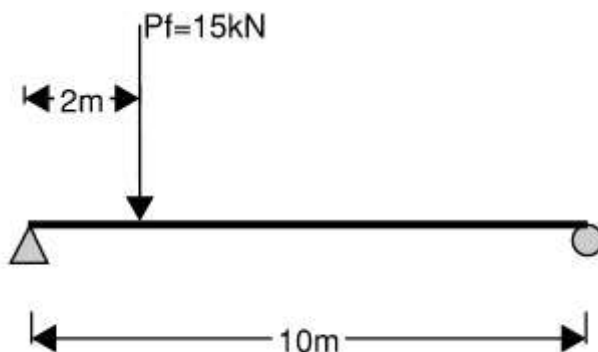
Question 7**1 pts**

The Axial forces in the Top Chord, Bottom Chord and Web members of a Truss can be written as _____ for a single bending member?

- Compression and Tension
- Bending Moment and Shear
- Nothing
- Torsion

Question 8**2 pts**

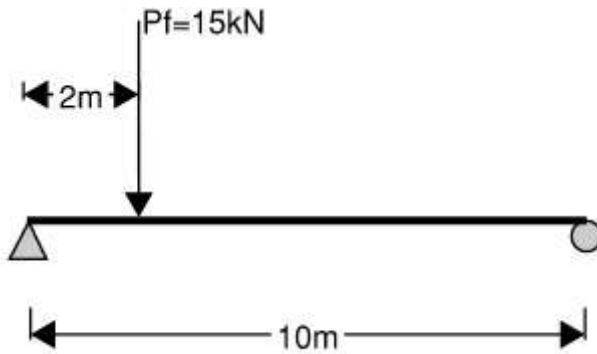
For the following Beam Loading Diagram, what is the maximum Reaction (kN) in the Y axis?



Write your answer with 0 decimals. Do not write the units.

Question 9**2 pts**

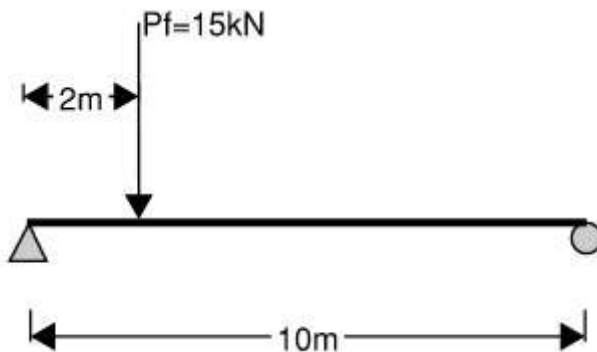
For the following Beam Loading Diagram, what is the maximum Shear (kN)?



Write your answer with 0 decimals. Do not write the units.

Question 10**2 pts**

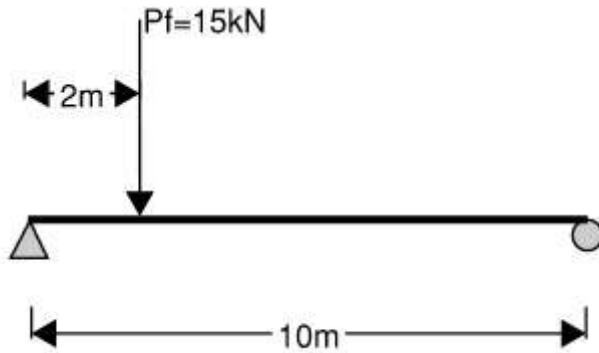
For the following Beam Loading Diagram, what is the maximum Moment (kNm)?



Write your answer with 0 decimals. Do not write the units.

Question 11**3 pts**

For the following Beam Loading Diagram, what is the Shear (kN) at 7.5m along the Beam?

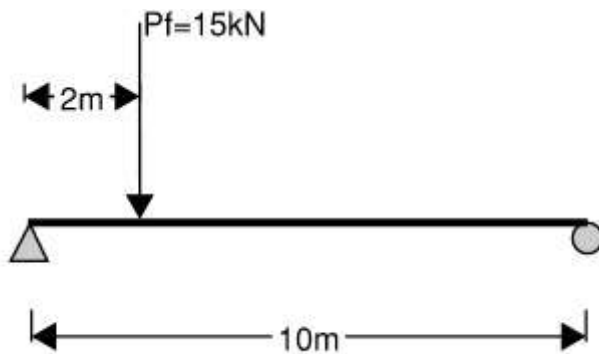


Write your answer with 0 decimals. Do not write the units.

Question 12

3 pts

For the following Beam Loading Diagram, what is the Moment (kNm) at 7.5m along the length of the Beam?



Write your answer with 0 decimals. Do not write the units.

No new data to save. Last checked at 10:30pm

Submit Quiz