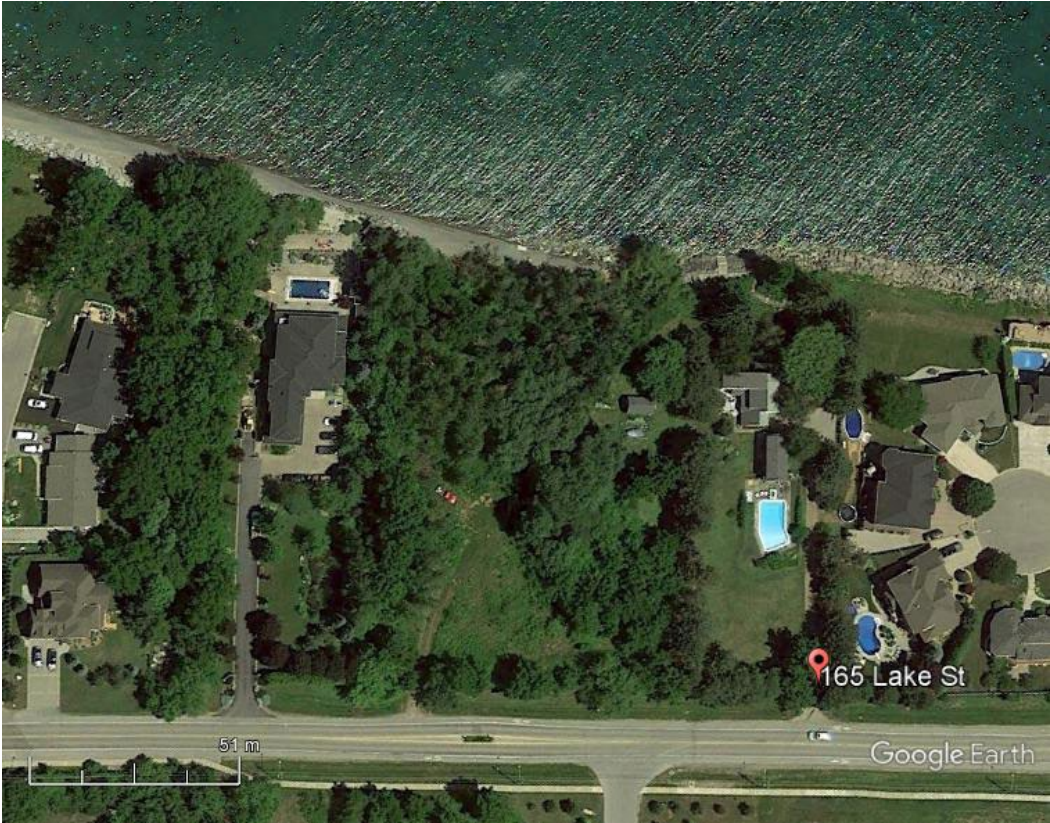
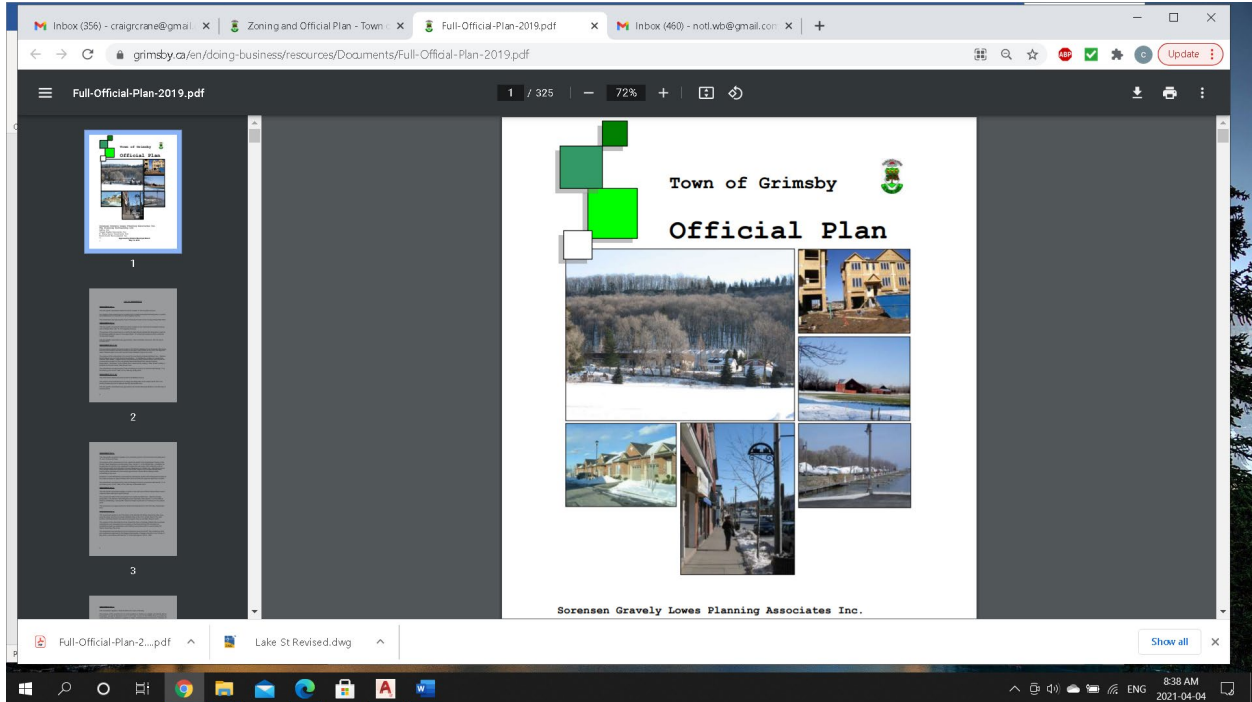


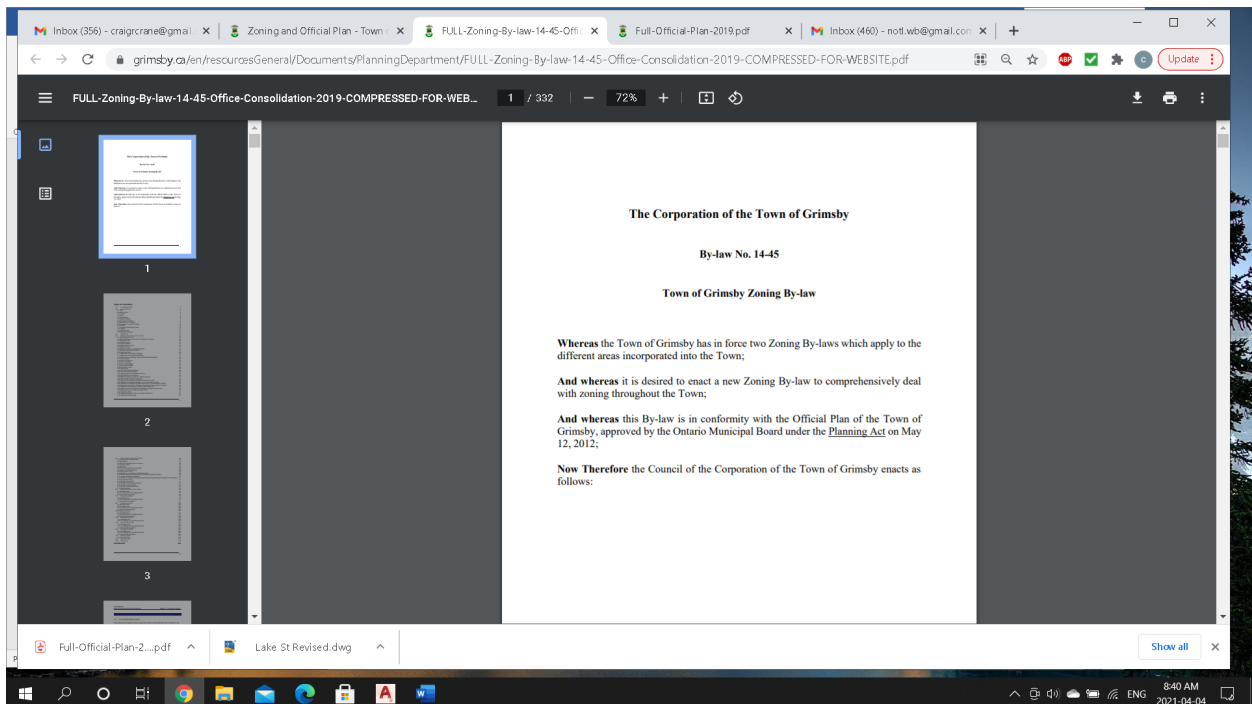
Grimsby Planning Context



<https://www.grimsby.ca/en/doing-business/resources/Documents/Full-Official-Plan-2019.pdf> (Official Plan)



<https://www.grimsby.ca/en/resourcesGeneral/Documents/PlanningDepartment/FULL-Zoning-By-law-14-45-Office-Consolidation-2019-COMPRESSED-FOR-WEBSITE.pdf>



Inbox (356) - craigr@grimsby.ca | Zoning and Official Plan - Town | FULL-Zoning-By-law-14-45-Offi... | Full-Official-Plan-2019.pdf | Inbox (460) - not.wb@gmail.com | Update

GRIMSBY

LIVING IN | PARKS, RECREATION AND CULTURE | DOING BUSINESS | TOWN HALL | I WANT TO...

Zoning By-law 14-45, as amended, was last consolidated in August 2019. Please [contact the Planning Department](#) to obtain the most up-to-date zoning information.

### How to Find the Zoning of a Property

The Zoning By-law includes schedules. Schedules are maps used to show where particular zoning regulations apply. To use the schedules to find the zoning of a particular property, follow these steps:

1. Find the location of the property you are looking for on Schedule 1 of the Zoning By-law. Areas of Town are assigned a number from 2 to 17 on Schedule 1. Take note of the number assigned to the area the property is within.
2. Find the schedules labelled with the number shown on Schedule 1. There will be two schedules associated with each number:
  - o Schedules with the letter "A" in their name show zone boundaries. Each zone has specific regulations assigned to it which can be found in the text of the Zoning By-law.
  - o Schedules with the letter "B" in their name show site specific exceptions. Site specific exceptions are additional zoning regulations which apply to the specific property or properties labelled with them. These additional zoning regulations are stated in tables within the text of the Zoning By-law.

Please note that the Zoning By-law is meant to be read in its entirety, and there may be additional regulations elsewhere in the By-law that apply to development on a property. [Contact the Planning Department](#) to obtain the most accurate and up-to-date zoning information for a property.

Full-Official-Plan-2...pdf | Lake St Revised.dwg | Show all

8:40 AM 2021-04-04